



### OVERVIEW

- ♦ The TV318 provides a decorative appearance to any wall application with its round profile and ribbed, white acrylic diffuser.

### FEATURES

- ♦ Available in 2ft. and 4ft. sizes.
- ♦ CRI greater than 80.
- ♦ Rated Life [L70] — 50,000 Hours.
- ♦ Fixture lumens per watt ratios [LpW] — Greater than 100.
- ♦ Class P Universal driver, 120-277V (50/60Hz)
- ♦ 0-10V Dimming
- ♦ Ultrasonic Occupancy Motion Sensors

### HOUSING

- ♦ Constructed from heavy-gauge cold rolled steel.
- ♦ Completed with a baked white finish with high reflectivity.\*
- ♦ Electrical knockouts are provided on the housing back and ends.

### LENS

- ♦ Extruded ribbed white acrylic lens. May be removed through the end caps.

\*Other colors available. Consult factory.

PROJECT \_\_\_\_\_

TYPE \_\_\_\_\_

QTY. \_\_\_\_\_

### APPLICATIONS

- ♦ Vanities

### INSTALLATIONS

- ♦ Designed for surface mount on walls.
- ♦ Mount individually in any direction.
- ♦ Suitable for ceiling surface mount.

### LED

- ♦ Small-scale diffuser evenly surrounds the LED light source.
- ♦ Linear arrayed LED modules produce a perfect combination of diffuse and effective illumination.
- ♦ Each board contains several precisely placed mid-power, high efficacy LEDs in a layout that replaces the need for supplemental heat sinking.
- ♦ The LED boards maximize optical efficiency by producing evenly diffused light.
- ♦ Dimming down to 1% on 0-10V dimming controls is standard.

### WARRANTY

- ♦ 5 year limited warranty is standard.  
*Exclusions may apply. Contact factory for terms and conditions.*

### LISTINGS/QUALIFICATIONS

- ♦ ETL C/US
- ♦ Damp Location
- ♦ Proudly Made in America



### ORDERING GUIDE

Fill in the boxes below with the corresponding **bold** options.

Example: **TV318-4-32L-40K-U-D1**

<b>TV318</b>				<b>U</b>	<b>D1</b>			
SERIES	FIXTURE LENGTH	NOMINAL LUMENS	COLOR TEMP.	VOLTAGE	DIMMING	OPTIONS		
<b>TV318</b>	<b>2</b> 2FT. <b>4</b> 4FT.	<b>2FT.</b> 10L 1000 13L 1300 19L 1900 27L 2700 <b>4FT.</b> 22L 2200 32L 3200 41L 4100	<b>30K</b> 3000K <b>35K</b> 3500K <b>40K</b> 4000K <b>50K</b> 5000K	<b>U</b> 120-277V	<b>D1</b> 0-10V Dimming to 1%*	<b>Emergency</b> <b>E5</b> Emergency Battery Back-Up, 500 Lumens <b>E7</b> Emergency Battery Back-Up, 700 Lumens <b>E10</b> Emergency Battery Back-Up, 1000 Lumens <b>E13</b> Emergency Battery Back-Up, 1300 Lumens <b>Sensor</b> <b>M1</b> Infrared Occupancy On/Off Sensor Externally Mounted <b>M3</b> Ultrasonic Occupancy On/Off Sensor Control <b>M4</b> Ultrasonic Occupancy Bi-level Sensor Control <b>M8</b> Infrared Occupancy Bi-level Sensor Externally Mounted		

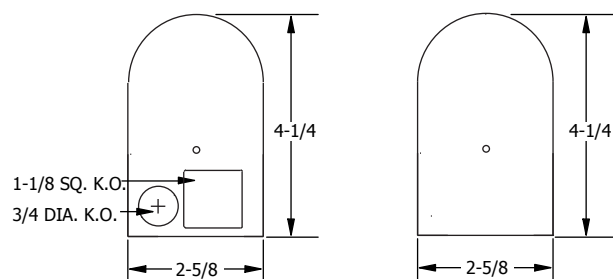
\*Compatible with 0-10V dimmers.

### PHOTOMETRICS

Photometric reports are available at [www.ullighting.net](http://www.ullighting.net)

### DIMENSIONS

END VIEWS



FIXTURE SIZE			
Nominal Size	Length (L)	Width (W)	Height (H)
2FT.	24-1/4	2-5/8	4-1/4
4FT.	48-1/4	2-5/8	4-1/4