



OVERVIEW

- ♦ Linear T8 fluorescent wall or ceiling luminaire designed for bath and vanity lighting and general-purpose utility lighting demands. A traditional-looking rounded ribbed white diffuser surrounds the light source with a soft attractive appearance while providing glare free illumination.
- ♦ The highly polished chrome finish expresses a sense of luxury and cleanliness, important elements for baths and vanities. The white enamel finish may be best suited for utility lighting needs.
- ♦ Available with 2 lamp (T8 configurations)
- ♦ Available in white enamel and polished chrome finishes

CONSTRUCTION

- ♦ Housing—Die formed from code grade cold rolled steel with galvanized steel ends riveted into place. An internal white enamel ballast cover/reflector is easily removed for wiring access. One-piece end caps secure the diffuser while closing off the entire fixture. Back knockout cluster for direct attachment to a recessed junction box. Finished with a highly polished chrome or white enamel paint. Optional finishes on request.
- ♦ Diffusers—A one-piece ribbed white diffuser is extruded from 100% virgin acrylic material for high performance, durability, and long lasting service. Permits maximum light transmission while offering total lamp obscurity.

PROJECT _____

TYPE _____

QTY. _____

APPLICATIONS

- ♦ Residential baths
- ♦ Residential vanities
- ♦ Multi-family housing
- ♦ Public restrooms
- ♦ Stairwells
- ♦ Utility rooms
- ♦ Closets

INSTALLATION

- ♦ Suitable for wall or ceiling mounting. May be mounted continuously with available joiner band. Please contact factory with row information for proper field set up.

ELECTRICAL

- ♦ All electrical components are UL or ETL Listed. Lamp holders provided ensure positive lamp retention.
- ♦ Sufficient knock-outs are provided for connections and through wiring.
- ♦ Electronic class P, thermally protected ballasts standard.
- ♦ Green ground screw installed in channel.
- ♦ All fixtures come equipped with ballast disconnect to meet NEC code 410.73.

APPROVALS

- ♦ ETL Listed. Suitable for dry and damp locations with ETL Damp Label.



ORDERING GUIDE

Fill in the boxes below with the corresponding **bold** options.

Example: **TV301-4-CH-2-32-T8-B8RN-1**

TV301			2		T8					
SERIES	FIXTURE LENGTH	FINISH	NO. OF LAMPS	WATTAGE	LAMP TYPE	BALLAST TYPE	VOLTAGE	OPTIONS		
TV301	T12									
	1 1FT.	CH WH	2	15	T8	B2BR	1	EM1	Emergency Battery Back Up 1 Lamp Operation	
	T8							2C	2 Circuit	
	2 2FT.	CH WH	2	17	T8	B8IN	MV	DIM	Dimming—Consult Factory	
	3 3FT.	CH WH	2	25	T8	B8IN	MV	M1	Infrared Occupancy On/Off Sensor, <i>Externally Mounted</i>	
	4 4FT.	CH WH	2	32	T8	B8IN	MV	PS	Rotary Switch	
								UG	Grounded Outlet	

Consult Factory for additional configurations and options not listed or shown.

Ballast

B8IN T8, Instant Start NBF

Voltage

1 120V

MV 120-277V

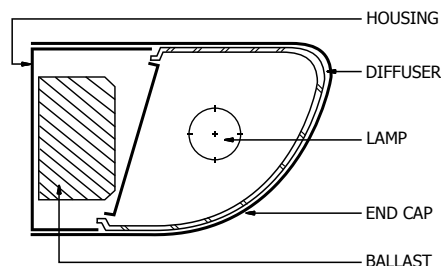
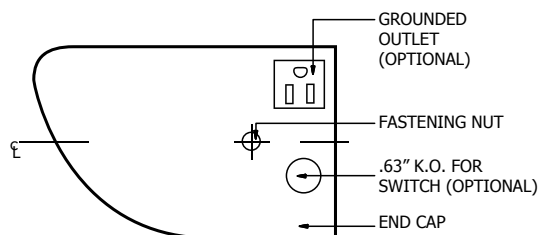
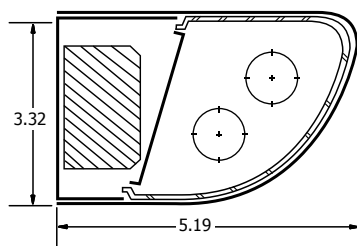
Finish

CH Chrome

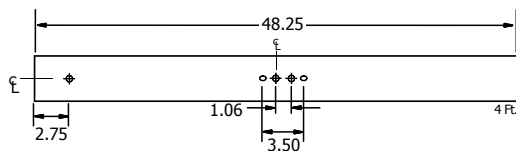
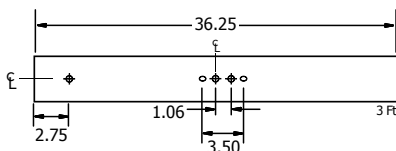
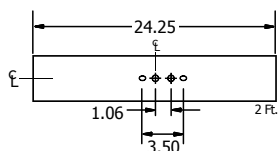
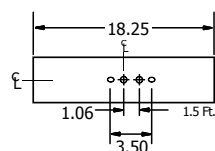
WH White

DIMENSIONS

2 Lamps



Back Views



Φ = 7/8" K.O.
○ = MOUNTING HOLE