

### OVERVIEW

- ♦ Linear T8 fluorescent wall or ceiling luminaire designed for bath and vanity lighting and general-purpose utility lighting demands. A traditional-looking rounded ribbed white diffuser surrounds the light source with a soft attractive appearance while providing glare free illumination.
- ♦ The highly polished chrome finish expresses a sense of luxury and cleanliness, important elements for baths and vanities. The white enamel finish may be best suited for utility lighting needs.
- ♦ Available with 1 lamp (T8 configurations)
- ♦ Available in white enamel and polished chrome finishes

### CONSTRUCTION

- ♦ Housing—Die formed from code grade cold rolled steel with galvanized steel ends riveted into place. An internal white enamel ballast cover/reflector is easily removed for wiring access. One-piece end caps secure the diffuser while closing off the entire fixture. Back knockout cluster for direct attachment to a recessed junction box. Finished with a highly polished chrome or white enamel paint. Optional finishes on request.
- ♦ Diffusers—A one-piece ribbed white diffuser is extruded from 100% virgin acrylic material for high performance, durability, and long lasting service. Permits maximum light transmission while offering total lamp obscurity.

PROJECT \_\_\_\_\_

TYPE \_\_\_\_\_

QTY. \_\_\_\_\_

### APPLICATIONS

- ♦ Residential baths
- ♦ Residential vanities
- ♦ Multi-family housing
- ♦ Public restrooms
- ♦ Stairwells
- ♦ Utility rooms
- ♦ Closets

### INSTALLATION

- ♦ Suitable for wall or ceiling mounting. May be mounted continuously with available joiner band. Please contact factory with row information for proper field set up.

### ELECTRICAL

- ♦ All electrical components are UL or ETL Listed. Lamp holders provided ensure positive lamp retention.
- ♦ Sufficient knock-outs are provided for connections and through wiring.
- ♦ Electronic class P, thermally protected ballasts standard.
- ♦ Green ground screw installed in channel.
- ♦ All fixtures come equipped with ballast disconnect to meet NEC code 410.73.

### APPROVALS

- ♦ ETL Listed. Suitable for dry and damp locations with ETL Damp Label.



### ORDERING GUIDE

Fill in the boxes below with the corresponding **bold** options.

Example: **TV300-4-CH-1-32-T8-B8RN-MV**

TV300			<b>1</b>		<b>T8</b>					
SERIES	FIXTURE LENGTH	FINISH	NO. OF LAMPS	WATTAGE	LAMP TYPE	BALLAST TYPE	VOLTAGE	OPTIONS		
TV300	T8									
	<b>1</b>   1FT.	<b>CH</b>   <b>WH</b>	<b>1</b>	<b>15</b>	<b>T8</b>	<b>B2BR</b>	<b>1</b>	<b>EM1</b>	Emergency Battery Back Up 1 Lamp Operation	
	<b>2</b>   2FT.	<b>CH</b>   <b>WH</b>	<b>1</b>	<b>17</b>	<b>T8</b>	<b>B8RN</b>	<b>MV</b>	<b>DIM</b>	Dimming—Consult Factory	
	<b>3</b>   3FT.	<b>CH</b>   <b>WH</b>	<b>1</b>	<b>25</b>	<b>T8</b>	<b>B8RN</b>	<b>MV</b>	<b>M1</b>	Infrared Occupancy On/Off Sensor, <i>Externally Mounted</i>	
	<b>4</b>   4FT.	<b>CH</b>   <b>WH</b>	<b>1</b>	<b>32</b>	<b>T8</b>	<b>B8RN</b>	<b>MV</b>	<b>PS</b>	Rotary Switch	
								<b>UG</b>	Grounded Outlet	

Consult Factory for additional configurations and options not listed or shown.

#### Ballast

**B8RN** T8, Rapid Start NBF (120V)

#### Voltage

**1** 120V

**MV** 120-277V

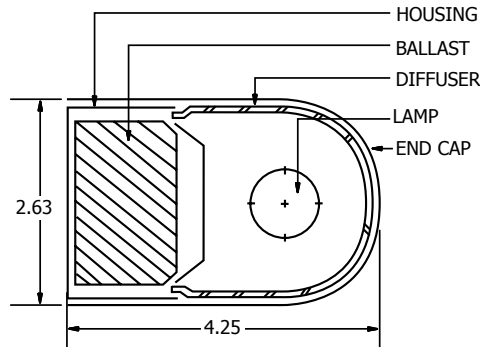
#### Finish

**CH** Chrome

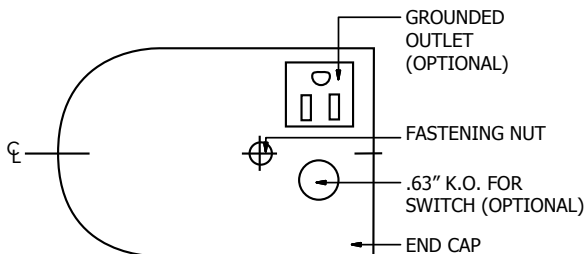
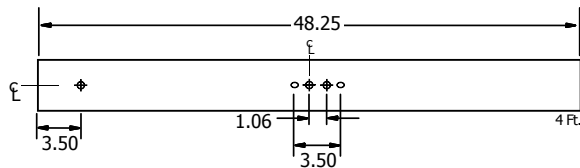
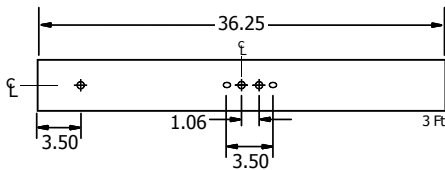
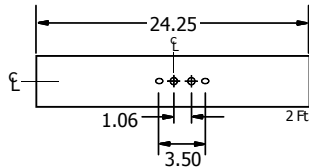
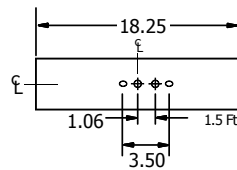
**WH** White

### DIMENSIONS

1 Lamp



Back Views



Φ = 7/8" K.O.

○ = MOUNTING HOLE