



### OVERVIEW

- ♦ The SM716 is a low profile wraparound linear luminaire.
- ♦ The Lumieo® acrylic prismatic lens allows for an even distribution of light that is wide and consistent.

### FEATURES

- ♦ Available in 2ft. and 4ft. sizes.
- ♦ CRI greater than 80.
- ♦ Rated Life [L70] — 50,000 Hours.
- ♦ Fixture lumens per watt ratios [LpW] — Greater than 100.
- ♦ Class P Universal driver, 120-277V (50/60Hz)
- ♦ 0-10V Dimming
- ♦ Motion Sensor

### HOUSING

- ♦ Low profile body constructed from die-formed heavy-gauge steel.
- ♦ Completed with a white polyester polymer with minimum 82% reflectivity.

### LENS

- ♦ The Lumieo® acrylic prismatic wrap lens with conical prisms along the bottom panel and linear prisms along the side panels.

Lumieo® is a registered trademark of A.L.P. Lighting and is reprinted with permission.

PROJECT \_\_\_\_\_

TYPE \_\_\_\_\_

QTY. \_\_\_\_\_

### APPLICATIONS

- ♦ Utility Areas
- ♦ Kitchens
- ♦ Storage Rooms
- ♦ Stairwells
- ♦ Corridors
- ♦ Garages

### INSTALLATIONS

- ♦ Designed for common direct surface mount ceilings.
- ♦ Mount individual or continuous run applications.
- ♦ Suitable for pendant mount applications with stem kit.

### LED

- ♦ Linear arrayed LED modules produce a perfect combination of diffuse and effective illumination.
- ♦ Each board contains several precisely placed mid-power, high efficacy LEDs in a layout that replaces the need for supplemental heat sinking.
- ♦ The LED boards maximize optical efficiency by producing evenly diffused light.
- ♦ Dimming down to 1% on 0-10V dimming controls is standard.

### WARRANTY

- ♦ 5 year limited warranty is standard.
- Exclusions may apply. Contact factory for terms and conditions.*

### LISTINGS/QUALIFICATIONS

- ♦ ETL C/US
- ♦ Damp Location
- ♦ DLC Listed
- ♦ Proudly Made in America



### ORDERING GUIDE

Fill in the boxes below with the corresponding **bold** options.

Example: **SM716-4-60L-40K-U-D1**

<b>SM716</b>				<b>U</b>	<b>D1</b>			
SERIES	FIXTURE LENGTH	NOMINAL LUMENS	COLOR TEMP.	VOLTAGE	DIMMING	OPTIONS		
<b>SM716</b>	<b>2</b> 2FT. <b>4</b> 4FT.	<b>2FT.</b> 22L 2200 32L 3200 41L 4100 <b>4FT.</b> 34L 3400 47L 4700 60L 6000 64L 6400 XXX XXXX Custom Lumen Package Contact Factory.	<b>30K</b> 3000K <b>35K</b> 3500K <b>40K</b> 4000K <b>50K</b> 5000K	<b>U</b> 120-277V	<b>D1</b> 0-10V Dimming to 1%*	<b>Emergency</b> <b>E5</b> Emergency Battery Back-Up, 500 Lumens <b>E7</b> Emergency Battery Back-Up, 700 Lumens <b>E10</b> Emergency Battery Back-Up, 1000 Lumens <b>E13</b> Emergency Battery Back-Up, 1300 Lumens <b>Sensor</b> <b>M1</b> Infrared Occupancy On/Off Sensor, Externally Mounted <b>M2</b> High Frequency Occupancy Sensor, Internally Mounted <b>Mounting</b> Surface mount is standard <b>SK</b> Stem Kit		

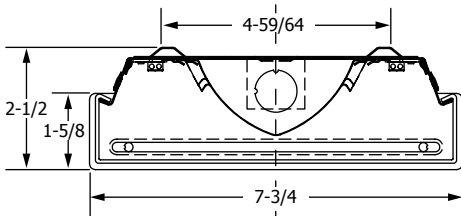
\* Compatible with 0-10V dimmers.

### PHOTOMETRICS

Photometric reports are available at [www.ullighting.net](http://www.ullighting.net)

### DIMENSIONS

END VIEW



BACK VIEW

