



OVERVIEW

- ♦ Mid-level, specification grade, surface mounted ceiling luminaire. For use in indoor applications where aesthetics and quality are important.
- ♦ Available in 1'x4', 2'x2' and 2'x4' sizes.
- ♦ Welded steel housing with white enamel finish.
- ♦ Shallow design. Only 4" deep.
- ♦ Deep cell aluminum parabolic louver (Nominal 1.5")
- ♦ Louver manufactured from low iridescent anodized aluminum.

CONSTRUCTION

- ♦ Housing—Die formed and spot welded, 22 gauge cold rolled steel housing assembly. Spot-welded for rigidity and clean appearance.
- ♦ Ballast Cover—Snaps into place eliminating the need for tools when accessing the ballast.
- ♦ Diffuser and Door Frame—Diffuser is held within a hinged frame door. The heavy gauge door frame hinges downward, on either side, and is held in the closed position by two positive cam latches. The metal-to-metal design of the door eliminates most light leaks.
- ♦ Finish—Powder painted white. Visible surfaces.

PROJECT _____

TYPE _____

QTY. _____

APPLICATIONS

- ♦ Commercial locations
- ♦ Retail Locations
- ♦ Public Buildings
- ♦ Offices
- ♦ Schools
- ♦ Medical Environments

INSTALLATION

- ♦ Knock-outs are provided for stem mounting. Mounting holes are provided.

ELECTRICAL

- ♦ All electrical components are UL or ETL Listed. Lamp holders provided ensure positive lamp retention.
- ♦ Sufficient knock-outs are provided for connections and through wiring.
- ♦ Electronic class P, thermally protected ballasts standard.
- ♦ Green ground screw installed in channel.
- ♦ All fixtures come equipped with ballast disconnect to meet NEC code 410.73.

APPROVALS

- ♦ ETL Listed. Suitable for dry and damp locations with ETL Damp Label.



ORDERING GUIDE


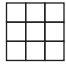

Fill in the boxes below with the corresponding **bold** options.

Example: **SM701-24-4-32-T8-B8IN-MV-18-1.5-ASF**

SM701			32		B8IN	MV		1.5	ASF				
SERIES	FIXTURE SIZE	NO. OF LAMPS	WATTAGE	LAMP TYPE	BALLAST TYPE	VOLTAGE	LOUVER CELLS	LOUVER DEPTH	LOUVER FINISH	OPTIONS			
SM701	T8										EM1	Emergency Battery Back Up 1 Lamp Operation	
	14 1X4	2	32	T8	B8IN	MV	8 8 CELLS	1.5 1.5"	ASF	EM2		Emergency Battery Back Up 2 Lamp Operation	
	22 2X2	2	32	U6T8	B8IN	MV	9 9 CELLS	1.5 1.5"	ASF		2C	2 Circuit	
	24 2X4	3 4	32	T8	B8IN	MV	18 18 CELLS	1.5 1.5"	ASF	DIM		Dimming—Consult Factory	
Consult Factory for additional configurations and options not listed or shown.													

Consult Factory for additional configurations and options not listed or shown.

LOUVER CELLS

1'x4'	2'x2'	2'x4'
8 CELLS 1x8	9 CELLS 3x3	18 CELLS 3x6
		

Ballast

B8IN T8, Instant Start NBF (Standard)

Voltage

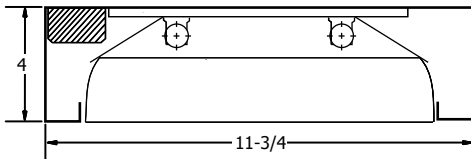
MV 120-277V

Louver Finish

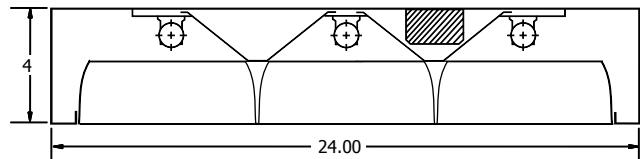
ASF Aluminum Silver Finish

DIMENSIONS

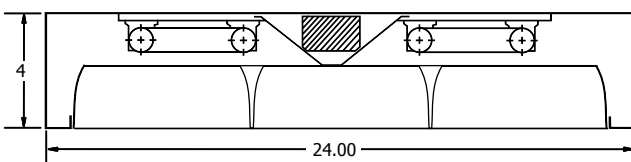
1'x4' — 2 Lamps — 8 Cells



2'x4' — 3 Lamps — 18 Cells



2'x2' — 2 U6 Lamps — 9 Cells



2'x4' — 4 Lamps — 18 Cells

