

OVERVIEW

- ♦ The SC110 is a narrow open strip linear luminaire.
- ♦ The small profile makes it an ideal choice for size restricted architectural applications.

FEATURES

- ♦ Available in 4ft. and 8ft. nominal lengths.
- ♦ CRI greater than 80.
- ♦ Rated Life [L70] — 50,000 Hours.
- ♦ Fixture lumens per watt ratios [LpW] — Greater than 127.
- ♦ 120-277V (50/60Hz)
- ♦ 0-10V Dimming.

HOUSING

- ♦ Constructed from heavy-gauge cold rolled steel.
- ♦ Completed with a white polyester polymer finish with high reflectivity.
- ♦ Electrical knockouts are provided on the housing back and ends.

PROJECT _____

TYPE _____

QTY. _____

APPLICATIONS

- ♦ Coves
- ♦ Industrial Racks
- ♦ Workshops
- ♦ Retail Shelving
- ♦ Utility Areas
- ♦ Warehouses

INSTALLATIONS

- ♦ Designed for pendant mount with adjustable aircraft cable. Sliding brackets are provided for easy installation.
- ♦ Cable suspends 48" from ceiling. Other lengths available.
- ♦ For individual or continuous run applications in any direction.
- ♦ Suitable for ceiling surface mount applications.

LED

- ♦ Linear arrayed LED modules produce a perfect combination of diffuse and effective illumination.
- ♦ Each board contains several precisely placed mid-power, high efficacy LEDs in a layout that replaces the need for supplemental heat sinking.
- ♦ The LED boards maximize optical efficiency by producing evenly diffused light.
- ♦ Dimming down to 1% on 0-10V dimming controls.

WARRANTY

- ♦ 5 year limited warranty is standard.
- Exclusions may apply. Contact factory for terms and conditions.*

LISTINGS/QUALIFICATIONS

- ♦ ETL C/US
- ♦ Damp Location



ORDERING GUIDE

Fill in the boxes below with the corresponding **bold** options.

Example: **SC110-4-50L-40K-U-D1**

SC110				U	D1			
SERIES	FIXTURE LENGTH	NOMINAL LUMENS	COLOR TEMP.	VOLTAGE	DIMMING	OPTIONS		
SC110	4 4FT. 8 8FT.	4FT. 39L 3900 50L 5000 68L 6800	30K 3000K 35K 3500K 40K 4000K 50K 5000K	U 120-277V	D1 0-10V Dimming to 1%*	Emergency E5 Emergency Battery Back-Up, 500 Lumens E7 Emergency Battery Back-Up, 700 Lumens E10 Emergency Battery Back-Up, 1000 Lumens E13 Emergency Battery Back-Up, 1300 Lumens Sensor M1 Infrared Occupancy On/Off Sensor, Externally Mounted Mounting SM Ceiling Surface Mount		

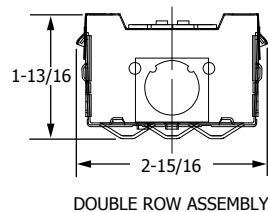
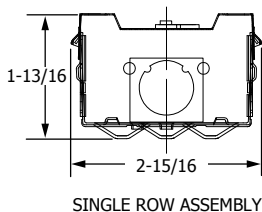
*Compatible with 0-10V dimmers.

PHOTOMETRICS

Photometric reports are available at www.ullighting.net

DIMENSIONS

END VIEWS



BACK VIEW

