



PROJECT _____

TYPE _____

QTY. _____



OVERVIEW

- ♦ General-purpose 3" narrow T8 fluorescent open lamp strip.
- ♦ Available in 1 lamp configurations
- ♦ Module lengths; 2Ft., 3Ft., 4Ft., 6Ft., and 8Ft.
- ♦ Various T8 Configurations

CONSTRUCTION

- ♦ Housing—Die formed from code gauge cold rolled steel. End plates quickly convert to snap-in continuous row joiners for uninterrupted wireway. Easy install socket plates have snap-in action. Wireway covers snap on or off for easy installation and maintenance. Optional screw-down covers for tight coves or added security. Sufficient knockouts are provided on the back and ends for all electrical connections. Baked white enamel finish provides a minimum reflectivity of 87%. Optional 20GA housing is available.
- ♦ Sockets—1/4 twist bi-pin or optional rotary locking type.

APPLICATIONS

- ♦ Commercial
- ♦ Industrial
- ♦ Retail
- ♦ Residential General Areas
- ♦ Indirect and Direct Cove/Valence Lighting Areas

INSTALLATION

- ♦ Designed for surface, stem or chain hanging, mounted individually or in continuous row.

ELECTRICAL

- ♦ All electrical components are UL or ETL Listed. Lamp holders provided ensure positive lamp retention.
- ♦ Sufficient knock-outs are provided for connections and through wiring.
- ♦ Electronic class P, thermally protected ballasts standard.
- ♦ Green ground screw installed in channel.
- ♦ All fixtures come equipped with ballast disconnect to meet NEC code 410.73.

APPROVALS

- ♦ ETL Listed. Suitable for dry and damp locations with ETL Damp Label.



ORDERING GUIDE

Fill in the boxes below with the corresponding **bold** options.

Example: **SC105-4-1-32-T8-B8IN-MV**

SC105		1		T8	B8IN	MV				
SERIES	FIXTURE LENGTH	NO. OF LAMPS	WATTAGE	LAMP TYPE	BALLAST TYPE	VOLTAGE	OPTIONS			
SC105	T8						EM1	Emergency Battery Back Up, 1 Lamp Operation		
	2 2FT.	1	17	T8	B8IN	MV	MS	Motion Sensor		
	3 3FT.	1	25	T8	B8IN	MV	DIM	Dimming—Consult Factory		
	4 4FT.	1	32	T8	B8IN	MV	Accessories			
	6 6FT.	1	25-TAN	T8	B8IN	MV	WG105	Wire-Guard		
	8 8FT.	1	32-TAN	T8	B8IN	MV	SS	Stem Set		
							CS	Cable Set		

Consult Factory for additional configurations and options not listed or shown.

Note:

TAN—Tandem Units, double the number of lamps.

Available with Instant Fit LED Tubes.

Ballast

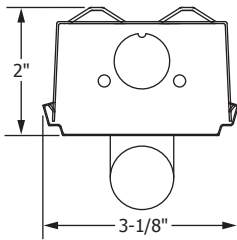
B8IN T8, Instant Start NBF (Standard)

Voltage

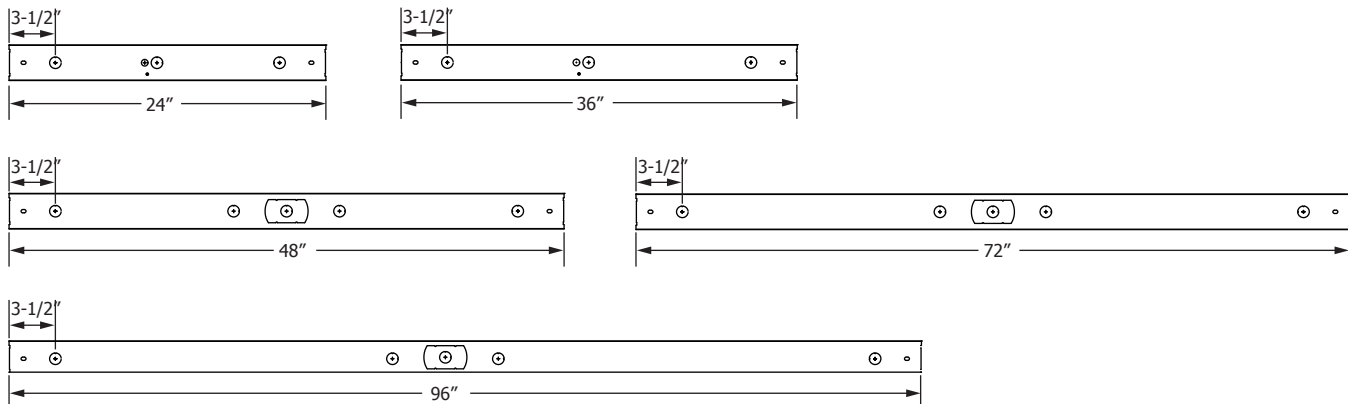
MV 120-277V

DIMENSIONS

END VIEW



BACK VIEWS



Double KO for easy wiring of the unit, 4ft or larger units.