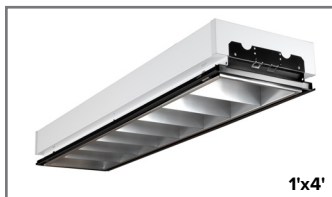




PROJECT _____

TYPE _____

QTY. _____



OVERVIEW

- ♦ A high performance 1'x4', 2'x2', and 2'x4' recessed fluorescent luminaire featuring a deep cell parabolic louver. Designed for maximum fixture efficiency while maintaining visual comfort.
- ♦ The precision optical parabolic louver assembly matches up with the para-contoured fixture housing to create a superior luminaire.
- ♦ Four pullout type grid clips are located in the housing to lock over the grid. Four auxiliary suspension points are also provided on the housing ends as an alternate method of securing to the building structure as required by code.
- ♦ Available in 2, 3, or 4 Lamps | T8 and T5 Lamps

CONSTRUCTION

- ♦ Housing—Die formed code grade or optional 20GA cold rolled steel. All parts securely riveted into place. Snap-in type wireway cover. All steel housing parts finished with a baked on white enamel paint applied after fabrication. Provides a minimum reflectivity of 87%.
- ♦ Optical Reflectors—Fabricated from Miro-4 enhanced specular aluminum with a 95% reflectivity.
- ♦ Louvers—Die-formed from semi-specular anodized aluminum, low iridescent finish with an anodic oxide coating. Mitered corners, interlocking construction, steel hinges and spring action latches. Eight standard cell configurations to match desired lamping for maximum lighting impact.

APPLICATIONS

- ♦ Commercial, Retail, and Public Buildings.
- ♦ Offices
- ♦ Schools
- ♦ Medical Environments.

INSTALLATIONS

- ♦ Designed for recessed installation into NEMA Type G lay-in acoustical grid ceiling systems, 1" or 9/16" grid work. For sheet rock ceilings, NEMA Type F applications, add additional flange kit.

ELECTRICAL

- ♦ All electrical components are UL or ETL Listed. Lamp holders provided ensure positive lamp retention.
- ♦ Sufficient knock-outs are provided for connections and through wiring.
- ♦ Electronic class P, thermally protected ballasts standard.
- ♦ Green ground screw installed in channel.
- ♦ All fixtures come equipped with ballast disconnect to meet NEC code 410.73.

APPROVALS

- ♦ ETL Listed. Suitable for dry and damp locations with ETL Damp Label.



ORDERING GUIDE


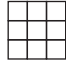
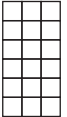
Fill in the boxes below with the corresponding **bold** options.

Example: **REG806-24-G-4-32-T8-B8IN-MV-18-3-ASF**

REG806		G					mv		3	ASF
SERIES	FIXTURE SIZE	MOUNTING	NO. OF LAMPS	WATTAGE	LAMP TYPE	BALLAST TYPE	VOLTAGE	LOUVER CELLS	LOUVER DEPTH	LOUVER FINISH
REG806	T8									
	14 1X4	G	2	32	T8	B8IN	MV	8 8 CELLS	3 3"	ASF
	22 2X2	G	2 3 4	17	T8	B8IN	MV	9 9 CELLS	3 3"	ASF
	22 2X2	G	2	32	U6T8	B8IN	MV	9 9 CELLS	3 3"	ASF
	24 2X4	G	2 3 4	32	T8	B8IN	MV	18 18 CELLS	3 3"	ASF
	T5HO									
	14 1X4	G	2	54	T5HO	B5HOP	MV	8 8 CELLS	3 3"	ASF
	22 2X2	G	3	24	T5HO	B5HOI	MV	9 9 CELLS	3 3"	ASF
	24 2X4	G	2 3 4	54	T5HO	B5HOP	MV	18 18 CELLS	3 3"	ASF

Consult Factory for additional configurations and options not listed or shown.

OPTIONS	
EM1	Emergency Battery Back Up 1 Lamp Operation
EM2	Emergency Battery Back Up 2 Lamp Operation
2C	2 Circuit
DIM	Dimming—Consult Factory
63WI	6ft. 3 Wire Whip Installed
64WI	6ft. 4 Wire Whip Installed

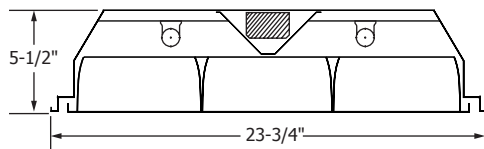
LOUVER CELLS		
1'x4' 8 CELLS 1x8	2'x2' 9 CELLS 3x3	2'x4' 18 CELLS 3x6
		

Ballast	
B8IN	T8, Instant Start NBF (Standard)
B5HOP	T5HO, Program Start
B5HOI	T5HO, Instant Start
Voltage	
MV	120-277V
Mounting	
G	Lay in for T-Bar Ceiling
Louver Finish	
ASF	Aluminum Silver Finish

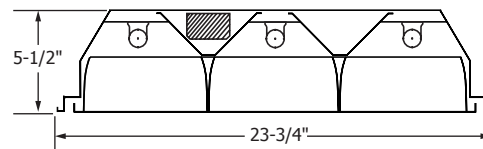
DIMENSIONS

END VIEWS

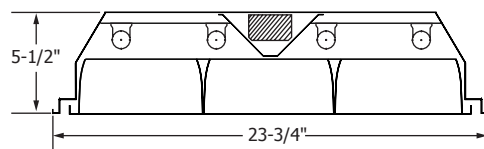
2X2 - 2 LAMPS - 9 CELLS



2X4 - 3 LAMPS - 18 CELLS



2X4 - 4 LAMPS - 18 CELLS



1X4 - 2 LAMPS - 8 CELLS

