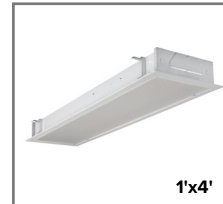




PROJECT _____

TYPE _____

QTY. _____



OVERVIEW

- ◆ Recessed flanged luminaire for installation into drywall ceilings. Heavy gauge four-sided flange mounts tight and straight against the ceiling providing a clean inconspicuous installation. A flanged troffer for use with prismatic lenses or celled louvers in concealed Z-bar ceilings.
- ◆ Four auxiliary suspension points are provided on the housing as a method of securing to the building structure as required by code.
- ◆ Available in 1'x2', 1'x4', 2'x2' and 2'x4' sizes,

CONSTRUCTION

- ◆ Housing—Die formed code grade heavy gauge cold rolled steel with ample strengthening embossments. End plates are securely riveted or screwed onto the housing. Removable internal ballast and wiring cover.
- ◆ Door Frames—Heavy gauge flush steel frame has mitered-look corners and contains the specified diffusing media. Hinges down from either side of the housing or may be completely removed. Two positive action cam latches hold the frame closed
- ◆ Diffuser—Standard diffuser is an acrylic prismatic clear pattern #12 lens. See ordering data for complete list of available media.
- ◆ Finish—White polyester powder coating applied after fabrication to all visible surfaces. Provides a durable long lasting and highly reflective finish.

APPLICATIONS

- ◆ Office Areas
- ◆ Retail Stores
- ◆ Recreation Rooms
- ◆ Hospitals

INSTALLATION

- ◆ Recessed installation into drywall ceilings with an overlapping flange trim design. Swing-out type leveling brackets have vertical adjust-ability from inside the housing. Tightening down brings the housing up tight against the ceiling.

ELECTRICAL

- ◆ All electrical components are UL or ETL Listed. Lamp holders provided ensure positive lamp retention.
- ◆ Sufficient knock-outs are provided for connections and through wiring.
- ◆ Electronic class P, thermally protected ballasts standard.
- ◆ Green ground screw installed in channel.
- ◆ All fixtures come equipped with ballast disconnect to meet NEC code 410.73.

APPROVALS

- ◆ ETL Listed. Suitable for dry and damp locations with ETL Damp Label.



ORDERING GUIDE

Fill in the boxes below with the corresponding **bold** options.

Example: **REG803-24-Z-4-32-T8-B8IN-MV**

SERIES	FIXTURE SIZE	MOUNTING	NO. OF LAMPS	WATTAGE	LAMP TYPE	BALLAST TYPE	VOLTAGE	OPTIONS			
REG803	T8					B8IN	MV				
	12 1X2	Z	2 3 4	17	T8	B8IN	MV	EM1	Emergency Battery Back Up 1 Lamp Operation		
	14 1X4	Z	2 3 4	32	T8	B8IN	MV	EM2	Emergency Battery Back Up 2 Lamp Operation		
	22 2X2	Z	2	32	U6T8	B8IN	MV	2C	2 Circuit		
	24 2X4	Z	3 4	32	T8	B8IN	MV	DIM	Dimming—Consult Factory		

Consult Factory for additional configurations and options not listed or shown.

Ballast

B8IN T8, Instant Start NBF (Standard)

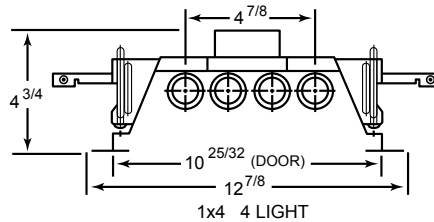
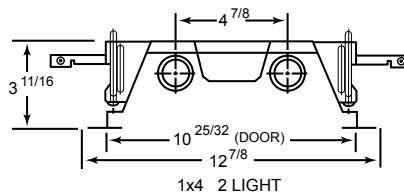
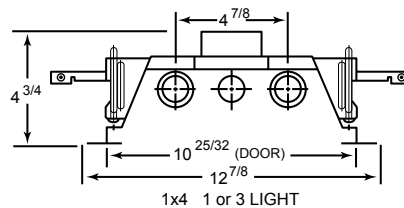
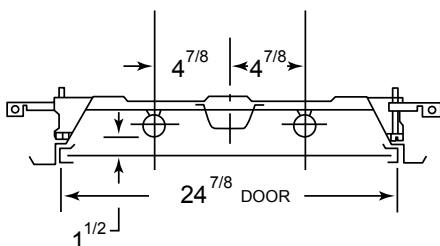
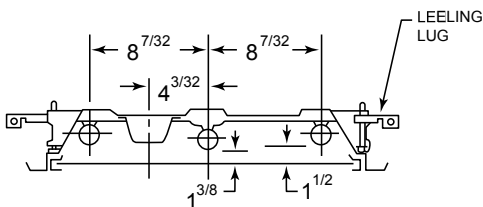
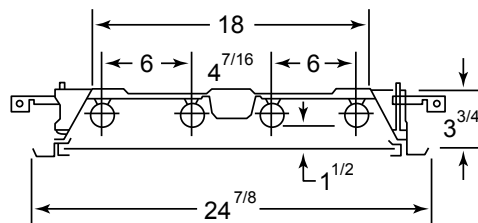
Voltage

MV 120-277V

Mounting

Z Flanged-In Concealed Z-Bar

DIMENSIONS



2'x2'

Minimum ceiling opening

23-3/8" x 24"

Maximum ceiling opening

24-7/8" x 25-1/16"

2'x4'

Minimum ceiling opening

23-3/8" x 48"

Maximum ceiling opening

24-7/8" x 49-1/16"

1'x4'

Minimum ceiling opening

11-3/8" x 48"

Maximum ceiling opening

12-7/8" x 49-1/16"