



OVERVIEW

- ♦ Economy-grade, recessed, lay-in T-Bar luminaire with framed door. For use in applications where low cost, high quality and ease of installation are required. Shallow design accommodates mounting into low ceiling plenum's
- ♦ Available in 1'x4', 2'x2' and 2'x4' configurations.
- ♦ Ideal for restricted plenum spaces.
- ♦ Integral earthquake clips.
- ♦ Deep cell aluminum parabolic louver (Nominal 1.5")
- ♦ Louver manufactured from low iridescent anodized aluminum.

CONSTRUCTION

- ♦ Housing— Die formed from cold rolled steel and embossed with stiffeners for strength and uniformity. Features durable steel bodies, quality paint finishes and superior electrical components.
- ♦ Full-length wireway covers are die formed for durability and attach easily without the use of tools.
- ♦ Door and Diffuser—Medium cell aluminum parabolic louver / door assembly that replaces the existing fluorescent fixture door frame. It is designed to fit the standard REG800 Fixture body. Available in Semi-specular silver, specular silver and baked white enamel finish.
- ♦ Ends—End plates have interlocking tabs and are securely attached by rivets—Ample knockouts are provided on back and ends for convenient installation—Auxiliary fixture end suspension points provided.
- ♦ Finish—Prior to painting, all metal parts are treated with a multi stage phosphate bonding process to ensure adhesion and inhibit rusting—Painted with a lighting grade baked white enamel, having a reflectance factor exceeding 87% for premium quality and durability.

PROJECT _____

TYPE _____

QTY. _____

APPLICATIONS

- ♦ Offices
- ♦ Hallways
- ♦ Commercial Locations

INSTALLATION

- ♦ Recessed troffers designed for installation in an inverted T-bar ceiling where a light source is required

ELECTRICAL

- ♦ All electrical components are UL or ETL Listed. Lamp holders provided ensure positive lamp retention.
- ♦ Sufficient knock-outs are provided for connections and through wiring.
- ♦ Electronic class P, thermally protected ballasts standard.
- ♦ Green ground screw installed in channel.
- ♦ All fixtures come equipped with ballast disconnect to meet NEC code 410.73.

APPROVALS

- ♦ ETL Listed. Suitable for dry and damp locations with ETL Damp Label.



ORDERING GUIDE

Fill in the boxes below with the corresponding **bold** options.

Example: **REG801-24-G-4-32-T8-B8IN-MV-18-1.5-ASF**

REG801		G				B8IN	MV		1.5	ASF
SERIES	FIXTURE SIZE	MOUNTING	NO. OF LAMPS	WATTAGE	LAMP TYPE	BALLAST TYPE	VOLTAGE	LOUVER CELLS	LOUVER DEPTH	LOUVER FINISH
REG801	T8									
	14 1X4	G	2	32	T8	B8IN	MV	8 8 CELLS	1.5 1.5"	ASF
	22 2X2	G	2 3 4	17	T8	B8IN	MV	9 9 CELLS	1.5 1.5"	ASF
	22 2X2	G	2	32	U6T8	B8IN	MV	9 9 CELLS	1.5 1.5"	ASF
	24 2X4	G	2 3 4	32	T8	B8IN	MV	18 18 CELLS	1.5 1.5"	ASF

Consult Factory for additional configurations and options not listed or shown.

OPTIONS	
EM1	Emergency Battery Back Up 1 Lamp Operation
EM2	Emergency Battery Back Up 2 Lamp Operation
2C	2 Circuit
DIM	Dimming—Consult Factory
63WI	6ft. 3 Wire Whip Installed
64WI	6ft. 4 Wire Whip Installed

LOUVER CELLS

1'x4' 8 CELLS 1x8	2'x2' 9 CELLS 3x3	2'x4' 18 CELLS 3x6

Ballast

B8IN T8, Instant Start NBF (Standard)

Voltage

MV 120-277V

Mounting

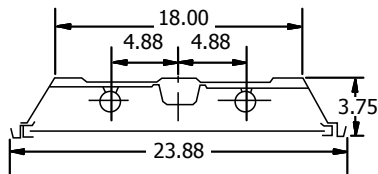
G Lay in for T-Bar Ceiling

Louver Finish

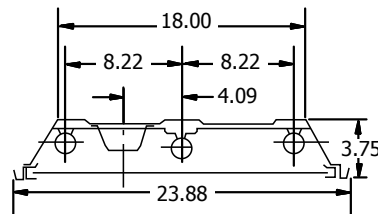
ASF Aluminum Silver Finish

DIMENSIONS

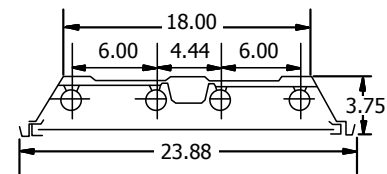
2X2, 2X4 | 2 LAMPS



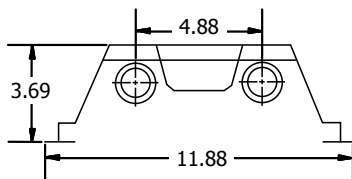
2X2, 2X4 | 3 LAMPS



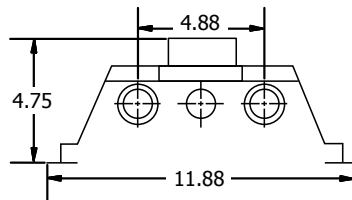
2X2, 2X4 | 4 LAMPS



1X4 | 2 LAMPS



1X4 | 1 OR 3 LAMPS



1X4 | 4 LAMPS (SPECIAL ORDER)

