

## LEDREADY



PROJECT \_\_\_\_\_

TYPE \_\_\_\_\_

QTY. \_\_\_\_\_



### OVERVIEW

- ◆ Specification grade, heavy-duty linear fluorescent open lamp luminaire.
- ◆ Flip-up socket bars
- ◆ Steel housing and ends with white enamel finish

### LED TUBES

- ◆ 120-277V (50/60Hz)
- ◆ Rated Life [L70] — 50,000 Hours.
- ◆ Wired for single or double end.
- ◆ Approximately 40% more energy efficient than standard F32T8 Lamps.

*Assembled with no ballast*

### APPLICATIONS

- ◆ Commercial
- ◆ Industrial
- ◆ Retail
- ◆ Residential
- ◆ Indirect and Direct Cove/Valence Lighting Areas.

### INSTALLATIONS

- ◆ Suitable for individual or continuous row mounting. May be surface mounted or suspended on stems, cables, or rods.

### CONSTRUCTION

- ◆ Housing—Die formed from 20GA gauge cold rolled steel. End plates welded into place. Socket bridges permanently riveted to the housing. A one-piece wireway cover, up to 8Ft. in length, attaches with wing nuts.
- ◆ Sockets—¼ twist bi-pin or optional rotary locking type.

### LISTINGS/QUALIFICATIONS

- ◆ Fixture Housing is ETL C/US Listed
- ◆ LED Tubes are ETL or UL C/US Listed and DLC Certified
- ◆ Proudly Made in America



### ORDERING GUIDE

Fill in the boxes below with the corresponding **bold** options.

Example: **LTSC109-4-T8-4-S**

LTSC109	4	T8							
SERIES	NO. OF TUBES	TYPE (LED TUBES)	TANDEM (TAN)	FIXTURE LENGTH	WIRED	OPTIONS			
LTSC109	4	T8	-	4   48" Length	S	<b>Emergency</b> <b>EM5</b> Emergency Battery Back Up, 500 Lumens - 1 Lamp <i>To operate, must use an electronic instant start ballast</i> <b>EM14</b> Emergency Battery Back Up, 1400 Lumens - 1 Lamp <i>To operate, must use an electronic instant start ballast</i> <b>Sensor</b> <b>M1</b> Infrared Occupancy On/Off Sensor, Externally Mounted <b>Dimming Systems</b> <b>DLT2</b> Dimmable Systems Including driver and LED tubes (1 or 2 LED Tubes) <b>24" Length</b> (Keystone) <b>DLT4</b> Dimmable Systems Including driver and LED tubes (1 or 2 LED Tubes) <b>48" Length</b> (Keystone)			
	4	T8	TAN	8   96" Length	D				
	4	T8	-	8   96" Length					

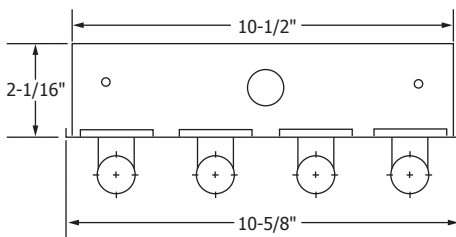
### TANDEM

Tandem Units, use double the number of tubes

**CONSULT FACTORY FOR WATTAGE, LUMENS AND COLOR TEMPERATURE.**

### DIMENSIONS

END VIEW



BACK VIEW

