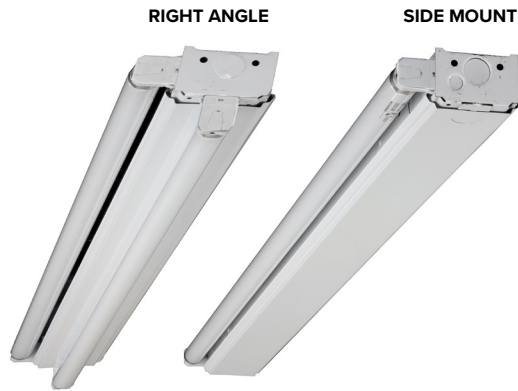


### LEDREADY



PROJECT \_\_\_\_\_

TYPE \_\_\_\_\_

QTY. \_\_\_\_\_

DOUBLE SIDED



### OVERVIEW

- ♦ An all purpose economy fluorescent 1-light sidemount strip that can be adapted to be a 2 light right angle or a 2 light double sided.
- ♦ All parts snap together for ease of installation and maintenance.
- ♦ Snap-in end cap for faster and easier assembly.
- ♦ Large selection of end plates available for a multitude of applications.
- ♦ Dual function end cap allows for row mounting by sliding into built-in aligning lances.

### LED TUBES

- ♦ 120-277V (50/60Hz)
- ♦ Rated Life [L70] — 50,000 Hours.
- ♦ Wired for single or double end.
- ♦ Approximately 40% more energy efficient than standard F32T8 Lamps.

*Assembled with no ballast*

### LISTINGS/QUALIFICATIONS

- ♦ Fixture Housing is ETL C/US Listed
- ♦ LED Tubes are ETL or UL C/US Listed and DLC Certified
- ♦ Proudly Made in America



### APPLICATIONS

- ♦ Coves
- ♦ Display Cabinets
- ♦ Task Lighting
- ♦ Elevators
- ♦ Under Cabinets
- ♦ Valances
- ♦ Work Stations

### INSTALLATION

- ♦ Surface or pendant mount, individually or in continuous rows. Sufficient knockouts are provided.

### CONSTRUCTION

- ♦ Housing-Die-formed heavy-gauge cold rolled steel
- ♦ Cover-Snap-on type to simplify installation.
- ♦ Two covers are used for 30-watt tandem and 40-watt tandems.
- ♦ Snap-in type. Ends also function as coupler for continuous row mounting.
- ♦ Socket plates accept slide-on or screw-down sockets.
- ♦ Pre-painted white polyester polymer with minimum 82% reflectivity.

### ORDERING GUIDE

Fill in the boxes below with the corresponding **bold** options.

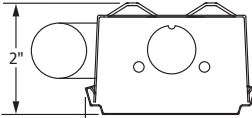
#### SIDE MOUNT

Example: **LTSC106-1-T8-4-S**

LTSC106	1	T8						
SERIES	NO. OF TUBES	TYPE (LED TUBES)	FIXTURE LENGTH	WIRED		OPTIONS		
LTSC106	1	T8	2   24" Length	S	Wired for Singled End	Emergency		
	1	T8	3   36" Length			EM5	Emergency Battery Back Up, 500 Lumens - 1 Lamp <i>To operate, must use an electronic instant start ballast</i>	
	1	T8	4   48" Length			EM14	Emergency Battery Back Up, 1400 Lumens - 1 Lamp <i>To operate, must use an electronic instant start ballast</i>	
						Sensor		
						M1	Infrared Occupancy On/Off Sensor, <i>Externally Mounted</i>	
						M8	Infrared Occupancy Bi-Level Sensor, <i>Externally Mounted</i>	
						Dimming Systems		
						DLT2	Dimmable Systems Including driver and LED tubes (1 LED Tube) <b>24" Length</b> (Keystone)	
						DLT4	Dimmable Systems Including driver and LED tubes (1 LED Tube) <b>48" Length</b> (Keystone)	

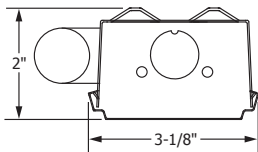
CONSULT FACTORY FOR WATTAGE, LUMENS AND COLOR TEMPERATURE.

SIDE MOUNT 1 LAMP



**CONSULT FACTORY FOR WATTAGE, LUMENS AND COLOR TEMPERATURE.**

SIDE MOUNT 1 LAMP

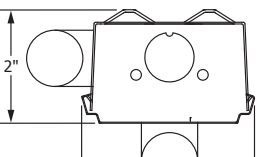


#### RIGHT ANGLE / DOUBLE SIDED

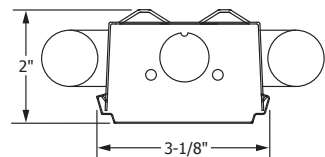
Example: **LTSC106-2-T8-4-S**

LTSC106	2	T8						
SERIES	NO. OF TUBES	TYPE (LED TUBES)	FIXTURE LENGTH	WIRED	OPTIONS			
LTSC106	2	T8	2   24" Length	S   Wired for Singled End D   Wired for Double End	Emergency			
	2	T8	3   36" Length		EM5	Emergency Battery Back Up, 500 Lumens - 1 Lamp <i>To operate, must use an electronic instant start ballast</i>		
	2	T8	4   48" Length		EM14	Emergency Battery Back Up, 1400 Lumens - 1 Lamp <i>To operate, must use an electronic instant start ballast</i>		
					Sensor			
					M1	Infrared Occupancy On/Off Sensor, <i>Externally Mounted</i>		
					M8	Infrared Occupancy Bi-Level Sensor, <i>Externally Mounted</i>		
					Dimming Systems			
					DLT2	Dimmable Systems Including driver and LED tubes (2 LED Tubes) <b>24" Length</b> (Keystone)		
					DLT4	Dimmable Systems Including driver and LED tubes (2 LED Tubes) <b>48" Length</b> (Keystone)		
					Mounting			
					DS	Double Sided 2 Lamps		

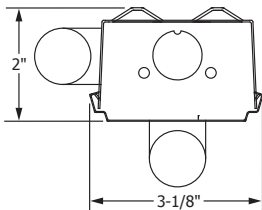
RIGHT ANGLE 2 LAMPS



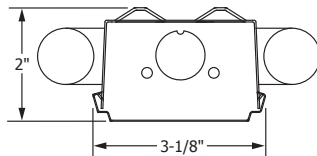
DOUBLE SIDED 2 LAMPS



RIGHT ANGLE 2 LAMPS



DOUBLE SIDED 2 LAMPS



### DIMENSIONS

BACK VIEWS

