



OVERVIEW

- ♦ 0-10V Dimmable LED T8 Tube

LAMP TYPE	LINEAR
BULB TYPE	T8 LED
BASE TYPE	G13 (MEDIUM BI-PIN)
WATTAGE	18W
COLOR TEMP.	4000K
DIMMING TYPE	0-10V

FEATURES

- ♦ Dimmable Via 0-10V Dimming Controls
- ♦ Replacement for Conventional Fluorescent Lamp
- ♦ 50,000+ Hour Lifetime
- ♦ Approximately 40% More Energy Efficient Than Standard F32T8 Lamps
- ♦ Environmentally Friendly: No Mercury Used
- ♦ Instant Start Up
- ♦ Frosted Lens Eliminates Pixelation
- ♦ Operating Temperature: -20°C/-4°F to 55°C/131°F
- ♦ Integral Driver (Non-Isolated), Eliminates the Need for External Driver or Ballast
- ♦ 100+ Lumens per Watt
- ♦ Plastic / Aluminum Construction

LISTINGS/QUALIFICATIONS

- ♦ UL Classified
- ♦ RoHS Compliant
- ♦ cRUus



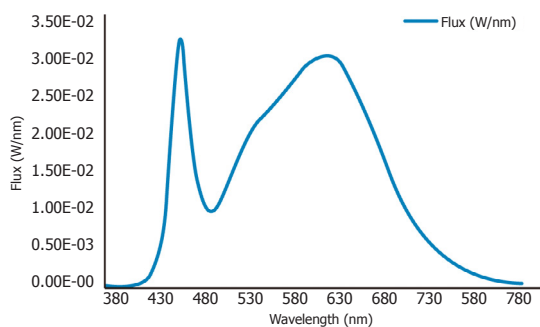
WARRANTY

- ♦ 5 year limited warranty is standard.
- Exclusions may apply. Contact factory for terms and conditions.*

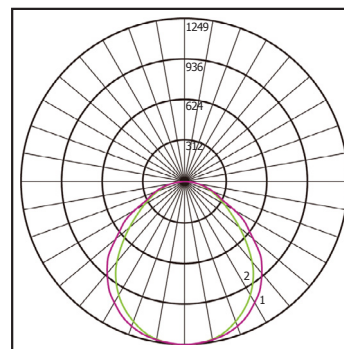
ELECTRICAL	
INPUT VOLTAGE	120-277VAC
POWER CONSUMPTION	18W
POWER FACTOR	>0.9
INPUT CURRENT	0.15A @ 120V 0.07A @ 277V

PHOTOMETRICS	
COLOR TEMP.	4000K
LUMINOUS FLUX	2000 lm
CRI	>80
EFFICACY	111 lm/w
BEAM ANGLE	120°

SPECTRAL DISTRIBUTION



POLAR CANDELA DISTRIBUTION



Maximum Candela = 1248.55
Located at Horizontal Angle = 0,
Vertical Angle 0

1. Violet Vertical Plane through Horizontal Angles (90-270)
2. Green Vertical Plane through Horizontal Angles (0-180)

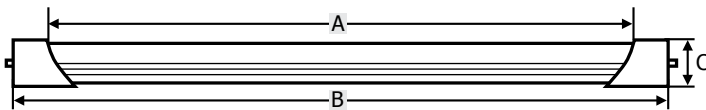
ORDERING GUIDE

Fill in the boxes below with the corresponding **bold** options.

Example: **LEDT8-4-18W-40K-U-D1**

LEDT8	4	18W	40K	U	D1
SERIES	TUBE LENGTH	WATTAGE	COLOR TEMP.	VOLTAGE	DIMMING
LEDT8	4 48"	18W 18 Watts	40K 4000K	U 120-277V	D1 0-10V Dimming

DIMENSIONS



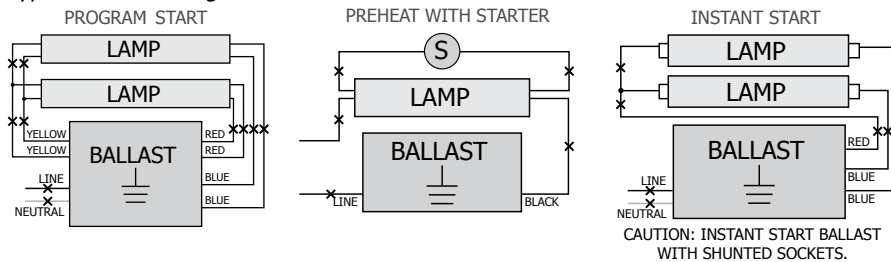
A (Illuminated Length)	45.70"
B (Body Length)	47.15"
C (Cross Section: Width x Height)	1.08" x 1.25"

NOMINAL LENGTH: 48" BASE TYPE: G13 (Medium Bi-Pin)

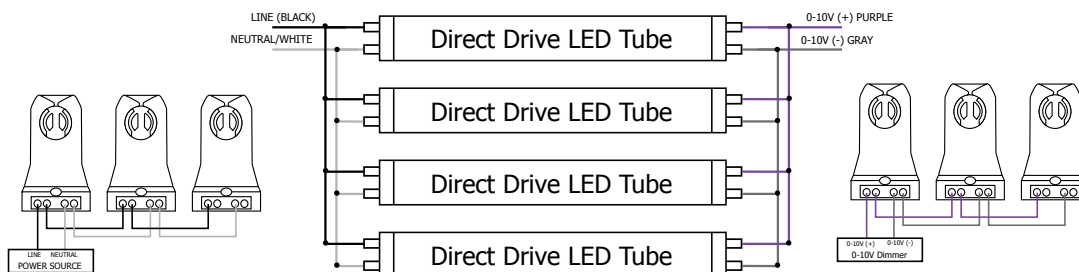
WIRING DIAGRAM

1. Cut all existing connections to ballast as shown below and remove ballast.

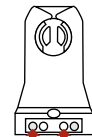
Typical Ballast Configurations:



2. Re-wire fixture as shown below.



Typical Non-Shunted Lampholder



Connect wires directly to these terminals

CAUTION: Use only non-shunted lampholders.

Do not install product in a fixture with shunted lampholders (found in all fixtures using instant start ballasts). If the current lampholders are shunted, remove them and replace them with non-shunted lampholders. Make new connections directly to terminals as indicated above.