

### OVERVIEW

- ♦ The LA619 is a shallow linear luminaire. The small profile makes it an ideal choice for size restricted architectural applications.

### FEATURES

- ♦ Available in 4ft. nominal length.
- ♦ CRI greater than 80.
- ♦ Rated Life [L70] — 50,000 Hours.
- ♦ Fixture lumens per watt ratios [LpW] — Greater than 100.
- ♦ 120-277V (50/60Hz)
- ♦ 0-10V Dimming.

### HOUSING

- ♦ Constructed from heavy-gauge cold rolled steel.
- ♦ Completed with a white polyester polymer finish with high reflectivity.
- ♦ Electrical knockouts are provided on the housing back and ends.

### LENS

- ♦ Linear Lumieo® lens that eliminates pixilation and emits high light transmission.

Lumieo® is a registered trademark of A.L.P. Lighting and is reprinted with permission.

PROJECT \_\_\_\_\_

TYPE \_\_\_\_\_

QTY. \_\_\_\_\_

### APPLICATIONS

- ♦ Store Aisle
- ♦ Display Areas

### INSTALLATIONS

- ♦ Designed for ceiling surface mount applications.
- ♦ Available as individual units.

### LED

- ♦ Linear arrayed LED modules produce a perfect combination of diffuse and effective illumination.
- ♦ Each board contains several precisely placed mid-power, high efficacy LEDs in a layout that replaces the need for supplemental heat sinking.
- ♦ The LED boards maximize optical efficiency by producing evenly diffused light.
- ♦ Dimming down to 1% on 0-10V dimming controls is standard.

### WARRANTY

- ♦ 5 year limited warranty is standard.
- Exclusions may apply. Contact factory for terms and conditions.*

### LISTINGS/QUALIFICATIONS

- ♦ ETL C/US
- ♦ Damp Location
- ♦ DLC Listed
- ♦ Proudly Made in America



### ORDERING GUIDE

Fill in the boxes below with the corresponding **bold** options.

Example: **LA619-4-41L-40K-U-D1**

<b>LA619</b>	<b>4</b>			<b>U</b>	<b>D1</b>			
SERIES	FIXTURE LENGTH	NOMINAL LUMENS	COLOR TEMP.	VOLTAGE	DIMMING	OPTIONS		
<b>LA619</b>	<b>4</b> 4FT.	<b>4FT.</b>	<b>30K</b> 3000K <b>35K</b> 3500K <b>40K</b> 4000K <b>50K</b> 5000K	<b>U</b> 120-277V	<b>D1</b> 0-10V Dimming to 1%*	<b>Emergency</b> <b>E5</b> Emergency Battery Back-Up, 500 Lumens <b>E7</b> Emergency Battery Back-Up, 700 Lumens <b>E10</b> Emergency Battery Back-Up, 1000 Lumens <b>E13</b> Emergency Battery Back-Up, 1300 Lumens <b>Sensor</b> <b>M1</b> Infrared Occupancy On/Off Sensor, Externally Mounted		
		<b>22L</b> 2200 <b>32L</b> 3200 <b>41L</b> 4100						

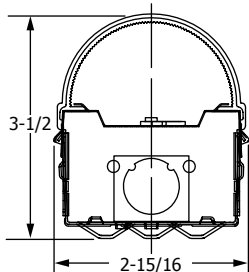
\*Compatible with 0-10V dimmers.

### PHOTOMETRICS

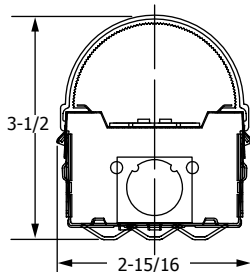
Photometric reports are available at [www.ullighting.net](http://www.ullighting.net)

### DIMENSIONS

END VIEW



SINGLE ROW ASSEMBLY



DOUBLE ROW ASSEMBLY

BACK VIEW

