



PROJECT
TYPE
QTY.



OVERVIEW

- ♦ Architectural linear fluorescent luminaire with a compact six-inch square profile. Provides controlled direct down-light illumination utilizing linear T8 fluorescent light sources.
- ♦ Continuous row mounting capability
- ♦ Clear, prismatic, acrylic diffuser
- ♦ Clean appearance. No exposed fasteners
- ♦ Available with 2 or 3 lamps

CONSTRUCTION

- ♦ Housing—Die formed code grade heavy gauge cold rolled steel with end caps welded into place for strength, uniformity and appearance. Half-end option allows for continuous run of the louver or diffuser as it passes from fixture-to-fixture. Plain-end option eliminates the knockout if not needed for electrical entry.
- ♦ Louvers and Diffusers—Call factory. Parabolic cross blades in semi-specular or white aluminum are standard shielding media. Acrylic prismatic pattern #12 is standard diffusing media.
- ♦ Finish—All steel housing parts are painted after fabrication with a white powder coating. Provides a reflectivity of 90% or greater. Optional colors on request.

APPROVALS

- ♦ ETL Listed. Suitable for dry and damp locations with ETL Damp Label.



APPLICATIONS

- ♦ Commercial environments
- ♦ Retail Locations
- ♦ Offices
- ♦ Schools

INSTALLATION

- ♦ Pendant and surface Mount
- ♦ Designed for individual or continuous runs. Surface mount or suspended from ceilings on auxiliary hanging hardware. Sufficient knockouts are provided on the back of the housing for all electrical connections

Optional

- ♦ Wall-Mount—Can be used in either the direct down-lighting position or turned over for all indirect up-lighting. Optional wall mount brackets space the luminaire off the wall.
- ♦ Slotted Top—When suspended from the ceiling provides a 10-12% up-lighting component to the ceiling.

ELECTRICAL

- ♦ All electrical components are UL or ETL Listed. Lamp holders provided ensure positive lamp retention.
- ♦ Sufficient knock-outs are provided for connections and through wiring.
- ♦ Electronic class P, thermally protected ballasts standard.
- ♦ Green ground screw installed in channel.
- ♦ All fixtures come equipped with ballast disconnect to meet NEC code 410.73.

ORDERING GUIDE

Fill in the boxes below with the corresponding **bold** options.

Example: **LA610-4-2-32-T8-B8IN-MV-AC48**

LA610				T8	B8IN	MV	AC48				
SERIES	FIXTURE LENGTH	NO. OF LAMPS	WATTAGE	LAMP TYPE	BALLAST TYPE	VOLTAGE	MOUNTING	OPTIONS			
LA610	T8										
	4 4FT.	2 3	32	T8	B8IN	MV					
	8 8FT.	2 3	32-TAN	T8	B8IN	MV					

Consult Factory for additional configurations and options not listed or shown.

Note:

TAN—Tandem Units, double the number of lamps

Individual units are not suitable for continuous row mounting and cannot be field modified.
For joining units together in continuous rows.
Consult Factory for ordering specifications and information.

EM1	Emergency Battery Back Up 1 Lamp Operation
EM2	Emergency Battery Back Up 2 Lamp Operation
2C	2 Circuit
DIM	Dimming—Consult Factory
WM	Wall Mount Orientation (Up or Down)
UP	Slotted Top. Allows 10-12% Up-Lighting
P	Pendant Mount
S	Surface Mount

Ballast

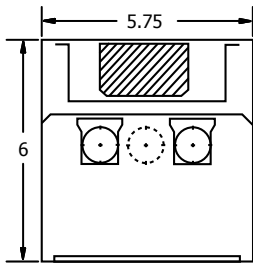
B8IN T8, Instant Start NBF (Standard)

Voltage

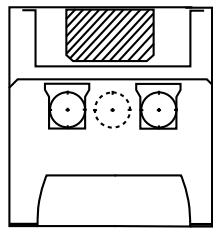
MV 120-277V

DIMENSIONS

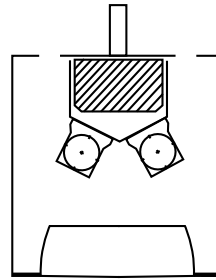
Flat Diffuser



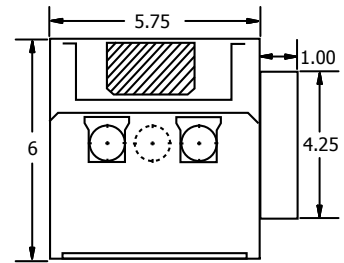
Parabolic Cross Baffle



Slotted Top Option



Wall Mount Option
Shown with Wall Mount Bracket



Back View

